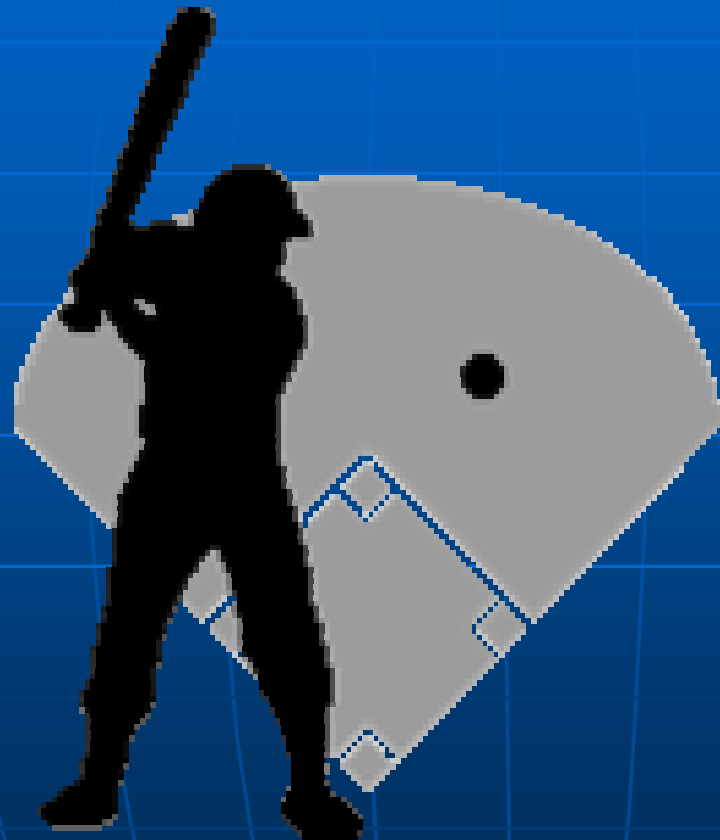




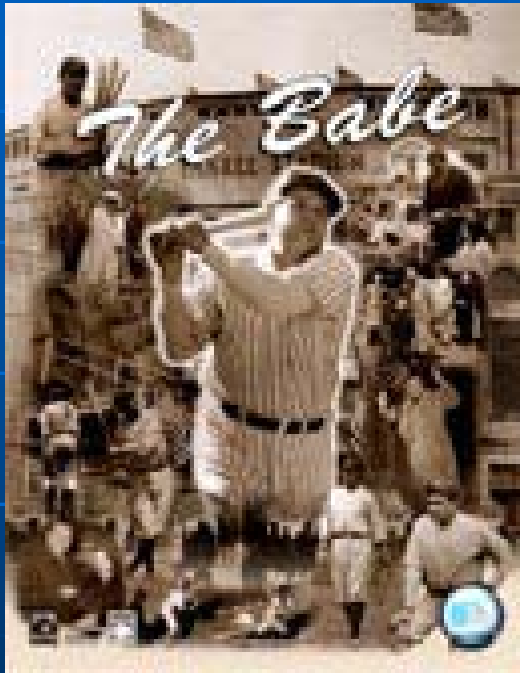
Babe Ruth League, Inc.

***From Humble Beginnings...
To The Cutting Edge of The
Youth Sports Arena***

Play Like The Legends



Two of the Most Famous Players of All Time!



Cal Ripken, Jr.

People Are Talking...



“For over 50 years, Babe Ruth Baseball has been committed to developing new generations of baseball players and fans. Major League Baseball would like to thank all of the players, coaches and volunteers who, through their dedication and hard work have made Babe Ruth Baseball such a great success.”

ALLAN H. (BUD) SELIG
Commissioner of Baseball

People Are Talking...



“It’s our goal that each youngster who plays in the Cal Ripken Baseball Division will not only learn the basics of the game, but will also experience the same level of excitement I felt every day when I put on my uniform and got ready to play. There’s nothing else like it!”

CAL RIPKEN, JR.

People Are Talking...



“I am so proud to serve on the Advisory Board of Babe Ruth League, Inc. Babe Ruth Softball plays a major role in helping young girls build self-esteem, while at the same time allowing them to dream big... making it to a Softball World Series.” Congratulations to each and every participant. If you do your best, you win!”

***Margie Wright
(NCAA All-Time Winningest Coach)
Head Softball Coach - Fresno State***

People Are Talking...

In Michael Jordan's Words...

“Even now, when people talk about my greatest thrill being the shot against Georgetown to win the NCAA title, I still think to myself that my greatest accomplishment really is the Most Valuable Player Award I got when my Babe Ruth League team won the state baseball championship”.

THE JORDAN RULES

By Sam Smith

Immortal Words of George Herman “Babe” Ruth

“The only real game, I think, in the world is baseball.”

“Never let the fear of striking out get in your way.”

“I thank heaven we have had baseball in this world...the kids...our national pastime.”

“Just one superstition. Whenever I hit a home run, I make certain I touch all four bases.”

“The way a team plays as a whole determines its success. You may have the greatest bunch of individual stars in the world, but if they don't play together, the club won't be worth a dime.”



History of the Babe Ruth Program

Over a half century ago, a group of men dedicated to the youth of America met in a suburb of Trenton, New Jersey and formed what became the very first Babe Ruth League. Babe Ruth Baseball caught on nationally, then internationally. It now ranks as the premier amateur baseball and softball program in the world.

Babe Ruth History

Babe Ruth League, Inc. recognizes Marius E. Bonacci as the Founding Father of the program, along with the contribution of the following nine men, Samuel Welch, Ferdinand J. Wagner, Ed Jones, Ted Jasek, Cliff Fovour, Boots Snyder, William Dombrowski, Maskill Paxson and Willard Carson, Jr.

Babe Ruth History

These ten men formed the Hamilton Township Little Bigger Baseball League, the forerunner of Babe Ruth Baseball. On May 14, 1951, the first ever Little Bigger League game was played between the Homedell Civic Association and the White Horse Fire Company at Switllik Park.

Babe Ruth History

From that game on, Babe Ruth League, Inc. grew from its first 10-team league in Hamilton Township, New Jersey to its present combined size of over 986,000 players on some 52,000 teams in more than 8,600 leagues and over 1.9 million volunteers.

Mission Statement

The Babe Ruth Baseball/Softball Program, using regulation competitive baseball and softball rules, teaches skills, mental and physical development, a respect for the rules of the game, and basic ideals of sportsmanship and fair play. In all aspects, Babe Ruth League, Inc. is committed to providing our participants the very best educational, sports experience possible. It is our fundamental belief that every child with a desire to play baseball or softball be afforded that opportunity.

Sportsmanship Code of BRL

The Goal for Every Participant...

- *Develop* a strong, clean, healthy body, mind and soul.
- *Develop* a strong urge for sportsmanlike conduct.
- *Develop* understanding of and respect for the **RULES**.
- *Develop* courage in defeat, tolerance and modesty in victory.
- *Develop* control over emotions and speech.
- *Develop* spirit of cooperation and team play.
- *Develop* into real, true **CITIZENS**.

Catch The Babe Ruth Feeling!

There's a certain amount of "bragging rights" that come along with being around since 1951...with being a top organized baseball and softball program for kids as young as four years old...with being the world's largest program for teenagers...with being a proven, educational, non-profit program!

While we've earned the right to brag a little, we'd prefer our pitch to hit the strike zone fair and square. So...

H-e-e-e-r-r-r-e-e-e's the pitch...



The Babe Ruth Feeling!

Above all else, Babe Ruth Baseball, Cal Ripken Baseball and Babe Ruth Softball are for the kids! In adopting rules, in establishing standards, and in ALL planning, our primary consideration is what is best for our participants and keeping the game fun!



The Divisions...Cal Ripken Division

The Cal Ripken Baseball Division (4-12 years of age) is comprised of major, minor, rookie and t-ball divisions.

The t-ball division, recommended for 4-, 5- and 6-year-olds, teaches the fundamentals of hitting and fielding, while learning to bat from a tee.

The rookie league, recommended for 7-, 8- and 9-year-olds uses a pitching machine concept, which results in more action at the plate and in the field, while avoiding the fear of being hit by a pitched ball.

The minor division, recommended for 9- and 10-year-olds helps players to continue to build and refine their fundamental skills and gain a better understanding of the game.

The major division, recommended for 11-and-12-year-olds, played on either a 60- or 70-foot diamond, with respective pitching distances of 46 feet and 50 feet, plays by the Official Baseball Rules, but implements some special rules as necessary for the development and welfare of this young age group.

New Cal Ripken Major 70' Program

Beginning with the 2007 season, Babe Ruth League, Inc. will be debuting another exciting dimension to its program, the Cal Ripken Major League 70' Division.

There will be *NO CHANGE* to the current Cal Ripken program. This new division, which has a 50' pitching distance and 70' base paths, is being offered as an additional option to the current league set-up.

This new division has a tournament trail from district competition through the World Series. Whether a league charters a Cal Ripken League or a Cal Ripken Major 70' program, their rookie and minor teams will still use the 46' pitching distance and 60' base paths.

Cal Ripken Major 70' Program

With today's advanced baseball and bat technology, there is a common perception that today's players are stronger and developing at a faster rate than ten to twenty years ago. For this reason, coupled with the new age determination date of April 30th making players up to three months older, the 70' program provides a great option.

The Divisions...13-15 Division

The foundation of the Babe Ruth program is the 13-15 baseball division, which was founded in 1951. Each local league organization charters as a member league but with authority to administer its own program within the framework of the Rules and Regulations and guidance of Babe Ruth League, Inc.

A unique part of the 13-15 division is the 13-Year-Old Prep League. Studies have shown that many young players lose interest in the game of baseball when they do not get ample playing time. In addition, it has been found that players have expressed fear of competing with 14- and 15-year-old players who have already experienced one to two years on the regulation size 90-foot diamond. With the 13-Year-Old Prep League, the 13-year-old player has a chance to play with his peers, thus avoiding the possibility of losing interest in playing baseball.

The Divisions...16-18 Division

The 16-18 baseball division is designed to provide organized regulation baseball competition for 16-, 17- and 18-year-olds as a development plateau where they can continue to learn and practice those principles which will help carry them through to a satisfactory and productive adulthood.

Based on the success and the same philosophies of the 13-Year-Old Prep League, the 16-Year-Old Prep League was organized to provide an ongoing learning process for its players. A 15-Year-Old Swing Player Option allows for participation of 15's and 16's playing together under the rules of Babe Ruth League, Inc.

The Divisions...Babe Ruth Softball

The Babe Ruth Softball Program is designed for girls ages 4 through 18 and provides a great deal of flexibility. Babe Ruth League, Inc. believes that a league must be able to structure itself according to the needs of the community. The official age divisions for softball include 12U (with an optional 10U level), 16U (with an optional 14U level) and 18U. The Softball 12U division offers the major, minor, rookie and t-ball divisions as described under the Cal Ripken Division.

The Divisions...Bambino Buddy Ball

Babe Ruth League, Inc. has always encouraged its member leagues to accept all players regardless of their physical or mental ability. The Bambino Buddy-Ball division was established for organizations who wish to charter a league that encompasses only challenged players ages 5-20 who are either physically or mentally challenged. This division makes allowance for a "buddy" to help the player swing a bat, round the bases, catch a ball, etc. There are no restrictions to the age of the "buddy". A Bambino Buddy-Ball team may be comprised of players ages 5-20 and sometimes older.

Swing Player Options

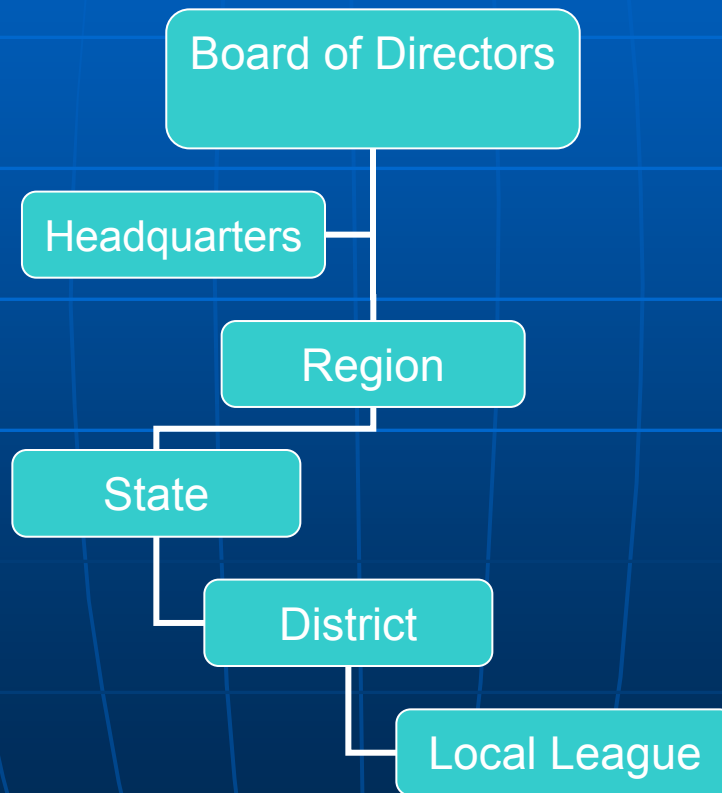
In order to keep the game fun, Babe Ruth League, Inc. has adopted the following two options:

- **12-Year-Old Swing Player Option** – The Cal Ripken League President may elect to permit a 12-year-old player to play in a Cal Ripken and/or 13-15 league.
- **15-Year-Old Swing Player Option** – The 13-15 League President may elect to permit a 15-year-old player to play in a 13-15 and/or 16-18 leagues.

For the tournament season, the Cal Ripken League President and the 13-15 League President will decide on which tournament team the 12-year-old player and 15-year-old player (respectively) participates.

A player can only participate on one tournament team in any given year and must meet all eligibility requirements for the respective division in which he participates.

Chain of Command



Babe Ruth Insurance Policies

League Accident Insurance



Babe Ruth League, Inc. has secured a team accident insurance program which is administered by K&K Insurance and placed with an A rated carrier to assure member teams are adequately protected for accidents. Basically, the plan provides all the teams in your league with an affordable and comprehensive coverage at a reasonable cost.

The accident policy provides primary coverage for all league personnel, managers, coaches, umpires, Board Members, etc.

Coverage is effective the day after the premium is mailed to Babe Ruth League, Inc.

Accident Insurance

Accident insurance can be “bound to be effective” without premium for a short period by calling Babe Ruth Headquarters.

Allows you to play teams other than Babe Ruth teams.

Coverage for participating in non-Babe Ruth tournaments provided if it is sanctioned by the local Babe Ruth League, Inc.

Provides coverage for injuries up to one full year from the date of the injury.

Provides dental coverage to natural teeth.

Accident Insurance

After a deductible of \$100, reimburses all covered expenses up to \$250,000.

Provides up to \$10,000 for accidental death or dismemberment.

Policy period is February 1st to February 1st (provided coverage is obtained by February 1st).

Babe Ruth League, Inc. Rules and Regulations require all member leagues to carry a group accident insurance policy.

Babe Ruth Insurance Policies

Liability Insurance



Babe Ruth League, Inc. has secured a league liability insurance plan, administered by K&K Insurance Group and placed with an A rated carrier.

This plan provides a choice of either a \$1 Million or \$2 Million plan.

The coverage is effective the day after the premium is mailed to Babe Ruth Headquarters.

This plan has no deductible.

Provides participant legal liability.

Participant vs. participant claims are not excluded.

Liability Insurance

Provides legal protection for all league personnel while they are acting within the scope of their duties.

Written on an "occurrence" form as opposed to a "claims made" form.

Limits of coverage chosen (\$1 or \$2 million) are provided for each incident (has no general aggregate).

Covers hosting of Babe Ruth tournaments.

Provides \$1 Million of hired and non-owned automobile insurance coverage (in excess of personal automobile insurance).

Liability Insurance

Covers additional insures at no additional cost.

Policy period is February 1st to February 1st (provided coverage is obtained by February 1st).

Babe Ruth League, Inc. Rules and Regulations require all member leagues to carry a liability insurance policy.

Babe Ruth Insurance Policies

Directors & Officers Insurance

The Directors and Officers insurance plan, administered by K&K Insurance and placed with an A rated carrier, is available only to those leagues which have purchased both the accident and liability insurance plans.

Coverage is provided for Boards of Directors rather than individual chartered leagues.

Directors & Officers Insurance

Coverage is provided for “Wrongful Acts” or “Errors and Omissions” that result in law suits as a result (some examples):

Discrimination (age, race, sex, handicap)

Wrongful dismissal, rejection or suspension of league personnel or players.

Acts beyond authority granted in bylaws.

Failure to enforce rules or bylaws.

Violation of State and Federal Laws (Anti-Trust, IRS, EEOC)

Suppression of First Amendment Rights (speech, expression).

Failure to properly manage league financial affairs.

Directors & Officers Insurance

\$1,000,000 aggregate.

Deductible of only \$500 per claim.

NOTE: Directors & Officers insurance is optional coverage. It is available only to those leagues which have purchased the Babe Ruth group accident and commercial general liability insurance plans.

Babe Ruth Insurance Policies

The insurance coverage offered through Babe Ruth League, Inc. for the chartered leagues is superior in that it is all-inclusive and allows for more freedom of activities while covering everyone involved with the league, not just the teams. Above all, the cost is extremely reasonable!

Babe Ruth League Tournament Competition A Win-Win Experience!

A special highlight for the more advanced players is an exciting and challenging post-season tournament trail for all age divisions.

The tournament trail commences with league playoffs and the selection of a tournament team for District competition, with the winner advancing on to the State and Regional Tournaments. The eight regional winners, within each division for which there is World Series competition, will go on to compete in a World Series.

The eight regions are territories from across the United States and Canada.

Babe Ruth League, Inc. Tournament Competition



Babe Ruth League, Inc. currently offers ten World Series:

- **Cal Ripken 10-Year-Old**
- **Cal Ripken Major 60'**
- **Cal Ripken Major 70'**
- **13-Year-Old**
- **14-Year-Old**
- **13-15**
- **16-Year-Old**
- **16-18**
- **Softball 12U**
- **Softball 16U**
- **The Softball 14U teams compete in an annual national invitational tournament.**

Babe Ruth League, Inc.

Tournament Competition

There is NO participation fee to play in official Babe Ruth tournament trail tournaments. We count on our local leagues to play host to all levels of tournament play, including the World Series.

By hosting a tournament, the local league benefits in numerous ways: by bringing in revenue, by uniting their community and by joining the tournament as "host team".

When post-season tournament play requires overnight accommodations, our highly-successful Host Family Program welcomes the teams, while providing a unique cultural and social exchange.

Fall Ball Programs



Many leagues take the opportunity to offer the players in their league a “fall” program. Fall programs may begin immediately following the regular season or some may begin in the autumn.

BRL, Inc. will allow a 13-15 baseball league or a 16U softball league to include new players or graduating 12-year-olds that will be new to the 13-15 division or 16U division for the season, provided they reside within the established geographical boundaries of the league. The 16-18 baseball division and the 18U softball division would follow suit.

Fall Ball Programs

Fall ball is a great time to introduce players to trying new field positions. It also offers an opportunity for more skills training and, in general, provides a fun atmosphere for the players to participate.

As for insurance, if the league has the coverage offered through Babe Ruth League, Inc., there is no additional charge as long as the number of teams participating in the fall or post-season program is not greater than the number which participated in the regular season.

Fall Ball Programs

If a league decides they are interested in a fall program, they need to put their request in writing to Babe Ruth League Headquarters providing the details of the planned activities that will take place in the fall program.

Upon review, they will be sent a letter advising them if their program is approved.

If approved, they will be asked to submit a new set of Official Babe Ruth team rosters making a notation they are for the "FALL PROGRAM".

National Umpires Association



In 1982, Babe Ruth League, Inc. inaugurated the National Umpires Associations for baseball and softball to assist its local leagues in educating the men and women on the rules and mechanics of the game to improve the quality of umpiring in their games. It was and is the intent of Babe Ruth League, Inc. to improve the quality of umpiring in youth leagues through innovative teaching and educational programs, as well as through superior educational resources.

We strongly recommend that each league's umpires join the Babe Ruth National Umpire Association.

National Umpires Association

By having your umpires join the Babe Ruth National Umpires Association, your league can be assured they will have a thorough knowledge of the rules and how to apply them on the field.

Babe Ruth Headquarters continually educates all NUA members through instructional clinics, videos and our periodic newsletter – UMPIREGRAM – which contains well-informed articles and offers great tips and advice for the amateur umpire.

Babe Ruth League, Inc. is proud to provide a national organization and network where individual umpires and local associations can promote professionalism, integrity and a love of the game.

Fund Raising



It is always our goal to help our leagues offer well-structured youth baseball and softball programs offering numerous benefits to their participants. We realize that leagues need to find ways on a yearly basis to generate funds to administer a successful youth program in their local community.

As an affiliated member of BRL, Inc., you will be able to select from several, successful fund raising campaigns that not only help your league raise those necessary dollars, but also offer fun activities for your participants.

American Sport Education Program



Babe Ruth League, Inc. is proud to partner with the American Sport Education Program (ASEP) to provide online training and certification for the organization's baseball and softball coaches.

Today, more than ever, children need positive role models and a wholesome outlet such as organized sports for the betterment of their physical and social well being. Today, more than ever, coaches need to go beyond teaching the rules of the game.

The American Sport Education Program is the leading provider of youth sport education programs in the United States. It is a division of Human Kinetics and is one of the premier coaching education programs in the market today.

This course is totally self-instructional; self-paced and offered online for convenience. The cost is minimal and the certification is good for three years.

It is Babe Ruth League's goal to have all of its coaches become the *coach that makes a difference in a youngster's life and become the best role model they can be!* Visit www.BabeRuthCoaching.org today!

Training At Its Best!



Babe Ruth League, Inc. realizes that coaching is a difficult job. It's a volunteer activity that requires a lot of time, effort and knowledge.

In order to keep the game fun, participants need to learn the basic fundamentals of the game. Babe Ruth League, Inc. is proud to offer its coaches some of the best training tools on the market today.

Available Training Tools

"Baseball The Ripken Way" DVD Series is unlike any instructional videos currently on the market. This set includes three DVD's showing the fundamentals of defense, hitting and pitching. Each DVD offers 60 minutes of instruction geared toward player age groups.

"The Ripken Way" CD-ROM is the first instructional CD-ROM offered by Cal Ripken, Jr. in conjunction with his brother Bill. This excellent tool is like having a coach's encyclopedia at your fingertips.

Margie Wright Softball Coaches' Series Video Collection is an excellent video collection which offers pitching fundamentals, defensive practice organization and hitting strategies, mechanics and techniques. Margie Wright is the winningest coach in NCAA Division 1 history and her videos are the perfect aid for softball coaches everywhere.

Service Representatives



Babe Ruth League, Inc. is happy to provide excellent customer service. The youth of our program are our highest priority. Therefore providing exceptional service to our leagues is of paramount importance. This is the reason we established toll-free numbers for any league officer or commissioner to contact Headquarters. It is also the reason why we at "home plate" believe our Service Representatives are second to none.

Our Service Representatives are more than just a voice on the phone. They are very knowledgeable about the program and each has a strong desire to help you.

The Babe Ruth Network

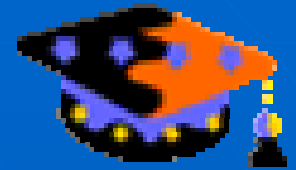


The Babe Ruth Network is an online league management tool to help our leagues communicate with their players, fans and staff. Designed specifically with Babe Ruth Leagues in mind, this expansive communication tool enables the leagues to register players online, display printable game schedules, save printable rosters to your computer, list league events, list news, notices and announcements, showcase league sponsors and even features "photo albums".

The newest addition to the Babe Ruth Network is the Online Roster Tool, which gives leagues the ability to easily add players' data, assign players to teams and print or digitally submit to Babe Ruth Headquarters.

No programming knowledge is required as the Babe Ruth Network offers design flexibility and easy to use administration tools.

BRL College Scholarship Fund



Babe Ruth League, Inc. recognizes that the youth are the future of our nation and recognize the significance of ensuring our next generation's continuing scholastic needs as well as the rising costs associated with education.

It is for those reasons that we established the Babe Ruth League College Scholarship Program for players who participated in the Babe Ruth Baseball and Softball Divisions.

Funds for the scholarship are generated from our Annual Golf Outing along with donations from our good friends at K&K Insurance Group, Rawlings and MBNA America.

To be eligible for the scholarship program, you can download and print the application from our website. Fill out the application and mail to:

**Babe Ruth Headquarters
1770 Brunswick Pike
Trenton, New Jersey 08638**

Babe Ruth League Complex

In 2002, Babe Ruth League, Inc. assumed ownership of the former Don Edwards Park in Newark, Ohio, a 30-acre complex. After many renovations being made to an already beautiful facility (through the generosity of The Baseball Tomorrow Fund, several of the program's corporate sponsors and many businesses and organizations in Licking County, Ohio), the Babe Ruth Complex has become the Babe Ruth League, Inc. "Field of Dreams".

Babe Ruth Complex

"Happenings" at The Babe Ruth Complex:



- Training facility
- Baseball and softball camps and clinics
- BRL District, State and Regional Tournaments
- Use by local league and outside groups, such as local high schools
- Invitational and Showcase tournaments
- Permanent home of Babe Ruth League 16-18 World Series



Communication

We tell it like it is! From our FREE quarterly newspaper, BULLPEN, to our internet sites, www.baberuthleague.org, to our weekly "Message from the President", we strive to keep you informed.

The BULLPEN is the official publication of Babe Ruth League, Inc.. And is published quarterly – January, March, June and September. Established in 1958, the BULLPEN is mailed from Trenton, New Jersey to news media, park and recreation administrators, Babe Ruth team sponsors, managers and coaches, league officials, umpires, professional baseball management and high school and college athletic directors and coaches. Additional distribution is conducted at various Babe Ruth clinics, Regional, State and District Meetings, sports equipment trade shows and athletic functions. It has a controlled international circulation of +38,000 and is also available online.



Your Vote Counts!

Our right to vote is a huge benefit that comes with living in a democratic society. It is a right that was purchased with much difficulty and the bloodshed of our forefathers. It is not a matter to be taken lightly.

Babe Ruth League, Inc. is proud of its many policies in effect for the betterment of the program. We value the vote of our membership and base our future actions on a group consensus. This is the reason we continually survey our membership to seek their advice and guidance on all future activities.

Teamwork has led us to the success we enjoy today, and teamwork will help us achieve our dreams and goals for tomorrow.



Why Babe Ruth?



- There's a place for **EVERYONE!** Babe Ruth League, Inc. promotes participation in the games of baseball and softball regardless of physical ability, gender, race, religion, national origin, or creed. BRL, Inc. highly encourages and promotes participation by minority groups. For many years, we have been a strong advocate of inner-city baseball and softball programs.
- We let **YOU** make the call! Our local leagues operate with the spirit of democracy and with much autonomy. The Babe Ruth Rules and Regulations place no undue restrictions on affiliates.

Why Babe Ruth?

- **More focus is placed on the local league season. Participation allows a child to grow and excel at their own pace and ability while learning individual skills, sportsmanship and teamwork.**
- **We aim to recapture the good old-fashioned values and traditions of the past – promoting excellence in academics, athletics and the arts; nurturing character development; fostering an understanding and an appreciation for others; offering a wholesome outlet for children to engage in group activities; guiding children to take responsibility for their actions; and fostering a sense for family and community.**

Why Babe Ruth?

- **Honesty, respect, caring and commitment are stressed to our children.**
- **Believing that childhood is a crucial time of our lives that molds the kind of adult we will become is what sets BRL head and shoulders above the rest.**
- **Using youth baseball and softball as an avenue to teach how to play well the game of life is detailed utmost in our policies.**
- **We promote youth baseball and softball as venues to foster fair play and honest competition instead of a win-at-all-costs attitude.**

Why Babe Ruth?



Last, but certainly not least, **WE PLAY BY THE RULES** and strongly emphasize respect for the rules by **ALL** participants.

Our motto is “When you’re part of Babe Ruth, you’re family!”

Get to know your neighbors and get involved with your community. *Hit a Grand Slam with the Babe Ruth League Total Package.*

America's Favorites Baseball and Softball

Take part in our national pastimes. Join
Today!!!

For more information on how to organize a Babe Ruth Baseball/Softball league or for further details on the program, please contact Babe Ruth Headquarters toll-free at **1-800-880-3142**. Let us help everyone in your neighborhood to participate and to have **FUN!**

